



## GTT Product Line-Up for Intelligent Rugged Display Solutions

Our experience and passion fulfill your need for industrial rugged displays for any harsh environment. We are uniquely placed to offer commercially viable and market-leading products to our customers worldwide. GTT will continue broadening the way of displays to enable more people to experience it.

### Vision



#### The intelligent Rugged display company

"Intelligent" means having a good understanding or a high mental capacity; quick to comprehend as a person. It also reflects our will in that we will think ahead for customers and act ahead of others.

"Rugged" means rough, harsh, or stern, as a person or a nature. It also reflects our will in that we will make the best outdoor rugged displays that are unlimitedly applicable in any harsh environment.

Set OEM/ODM

Indoor custom display

Outdoor rugged display

### Technology



Rugged housing & Circuit design technology

Rugged controller board

Designed for water-proof/anti-dust/anti-vandal/vibration control (IP67, NEMA6)

Aluminum housing for rust prevention

Designed with protective coating/UV block (Air flow, Air gap)

Brightness & Temperature control technology

Light/temperature detecting sensors and heat control (Heat sink, Internal cooling fan)

Heat ITO conductive coating, Designed for low temperatures

Linear dimming control technology for full range

Advanced technology

Active/Passive brightness enhancement technology via self-BLU

Optical surface treatment technology (Anti-reflective, Anti-glare coating)

Optical bonding, Various touch sensor overlay, Tempered glass

Curved Display design technology  
Design for curved LCD and BLU of various radii of curvature (1500R, 1800R)  
Applied for optimized curved etching to minimize Oval Mura  
Designed all-in-one panel and monitor structure  
Design of heat sink for high brightness BLU  
Design for quantum dot film and blue LED light source  
Curved touchscreen matching technology  
Button Display design technology  
Dimensional light pattern design by external LED lighting  
Clear button design by implementing low tunnel effect  
Implementing the interface of push buttons and touchscreens  
LED-deco & Infinity mirror display design technology  
Design of halo visual system by applying RGB LED  
Design of WS2812 control circuit-embedded LED module and controller  
Applied for partial-half mirror & infinity mirror display  
Applied for half mirror touchscreen display of single or multi-layer

## GTT's products line-up

I	. Product line-up	3
II	. PCAP touch monitor Indoor	4
III	. PCAP touch monitor Outdoor	7
IV	. New product (Light & Sound Haptic Touch)	11

# Product line-up



Concept	Indoor PCAP Touch Monitor					Outdoor PCAP Touch Monitor		
Inch	17"	19"	21.5"	27"	32"	21.5"	32"	43"
Resolution	1280x1024	1280x1024	1920x1080	1920x1080	1920x1080	1920x1080	1920x1080	1920x1080
Ratio	5:04	5:04	16:09	16:09	16:09	16:09	16:09	16:09
Brightness	250	250	250	300	500	1,500	1,500	1,500
View Angle	170/160	178/178	178/178	178/178	178/178	178/178	178/178	178/178
Input Signal	HDMI/VGA/DP	HDMI/VGA/DP	HDMI/VGA/DP	HDMI/VGA/DP	HDMI/VGA/DP	HDMI/DP	HDMI/DP	HDMI/DP
Input Voltage	DC 12V	DC 12V	DC 12V	DC 12V	AC	DC 12V	AC	AC
Operating Temp.	0 ~ 40 °C	0 ~ 40 °C	0 ~ 40 °C	0 ~ 40 °C	0 ~ 40 °C	-20 ~ 50 °C	-20 ~ 50 °C	-20 ~ 60 °C
Status	MP	MP	MP	MP	MP	MP	MP	MP

Concept	Indoor PCAP Touch PC Monitor				Outdoor PCAP Touch PC Monitor		
Inch	21.5"	23.8"	27"	32"	21.5"	32"	43"
Resolution	1920x1080	1920x1280	1920x1080	1920x1080	1920x1080	1920x1080	1920x1080
Ratio	16:09	16:09	16:09	16:09	16:09	16:09	16:09
Brightness	250	1,000	300	500	1500	1500	1500
View Angle	178/178	178/178	178/178	178/178	178/178	178/178	178/178
Input Signal	HDMI/VGA/DP	HDMI/VGA/DP	HDMI/VGA/DP	HDMI/VGA/DP	HDMI/VGA/DP	HDMI/VGA/DP	HDMI/VGA/DP
Input Voltage	DC 12V	DC 12V	DC 12V	AC	DC 12V	AC	AC
Operating Temp.	0 ~ 40°C	0 ~ 40°C	0 ~ 40°C	0 ~ 40°C	-20 ~ 50°C	-20 ~ 50°C	-20 ~ 60°C
PC	Intel Quad Core (Windows 10)	Intel Quad Core (Windows 10)	Intel Quad Core (Windows 10)	Intel Quad Core (Windows 10)	Intel Quad Core or AMD Ryzen (Windows 10)	Intel Quad Core or AMD Ryzen (Windows 10)	Intel Quad Core or AMD Ryzen (Windows 10)
Status	Development (MP 2Q, 2023)	MP	Development (MP 2Q, 2023)	Development (MP 3Q, 2023)	Development (MP 2Q, 2023)	Development (MP 3Q, 2023)	MP

# PCAP touch monitor – Overview (Indoor)

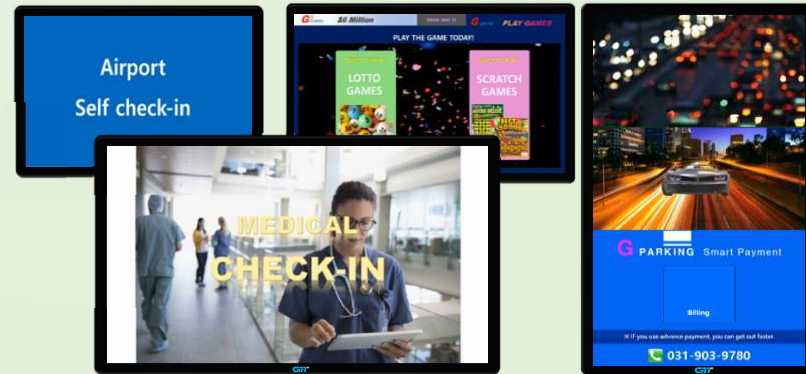
## ◆ Open frame monitor **Integrated PCAP Touch**

**Easy installation** [Mechanically ELO's compatible]

**Support small deals** [Standard products in stock]

**Reliability & reasonable pricing**

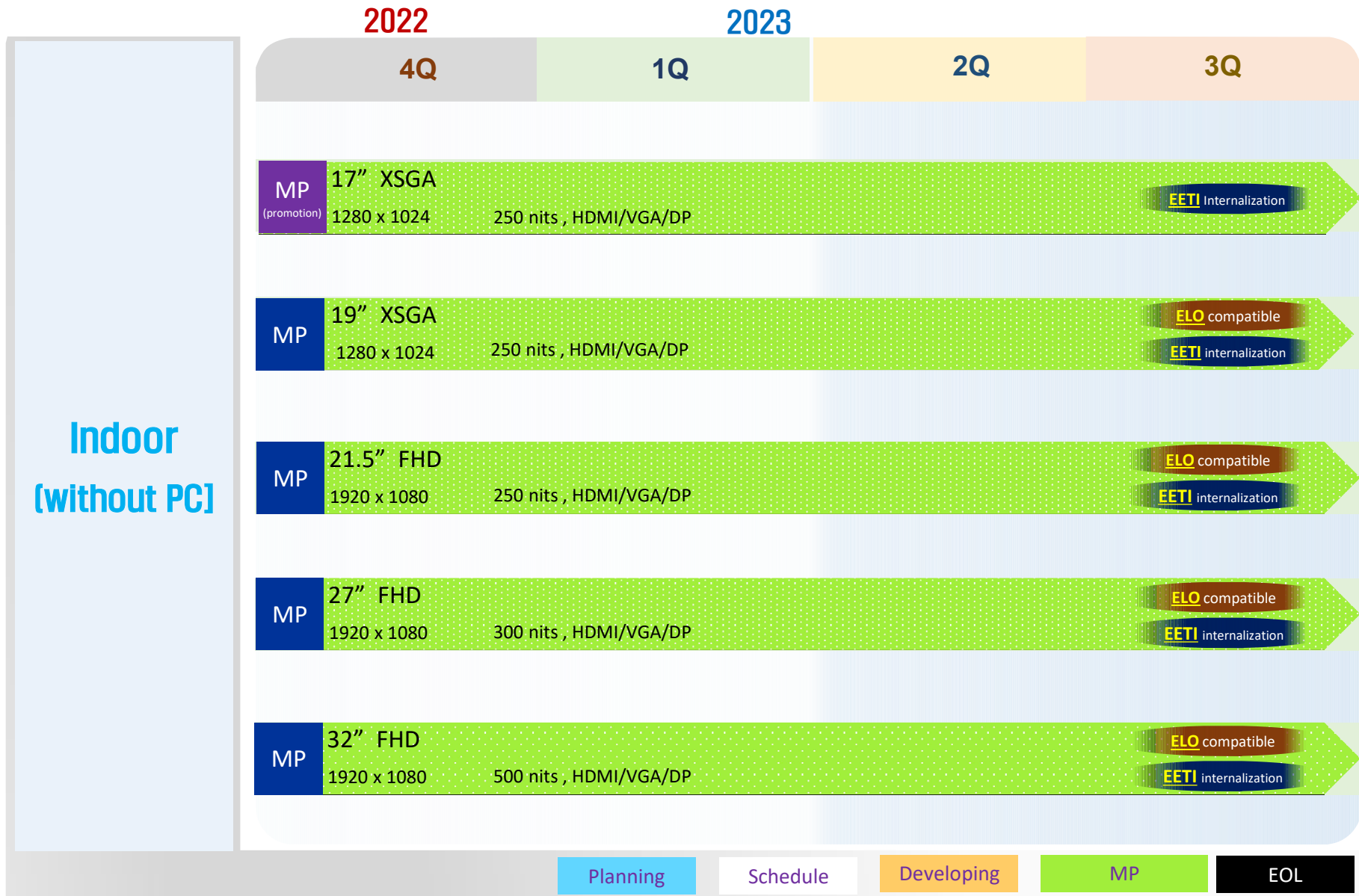
**Application specific design experts**



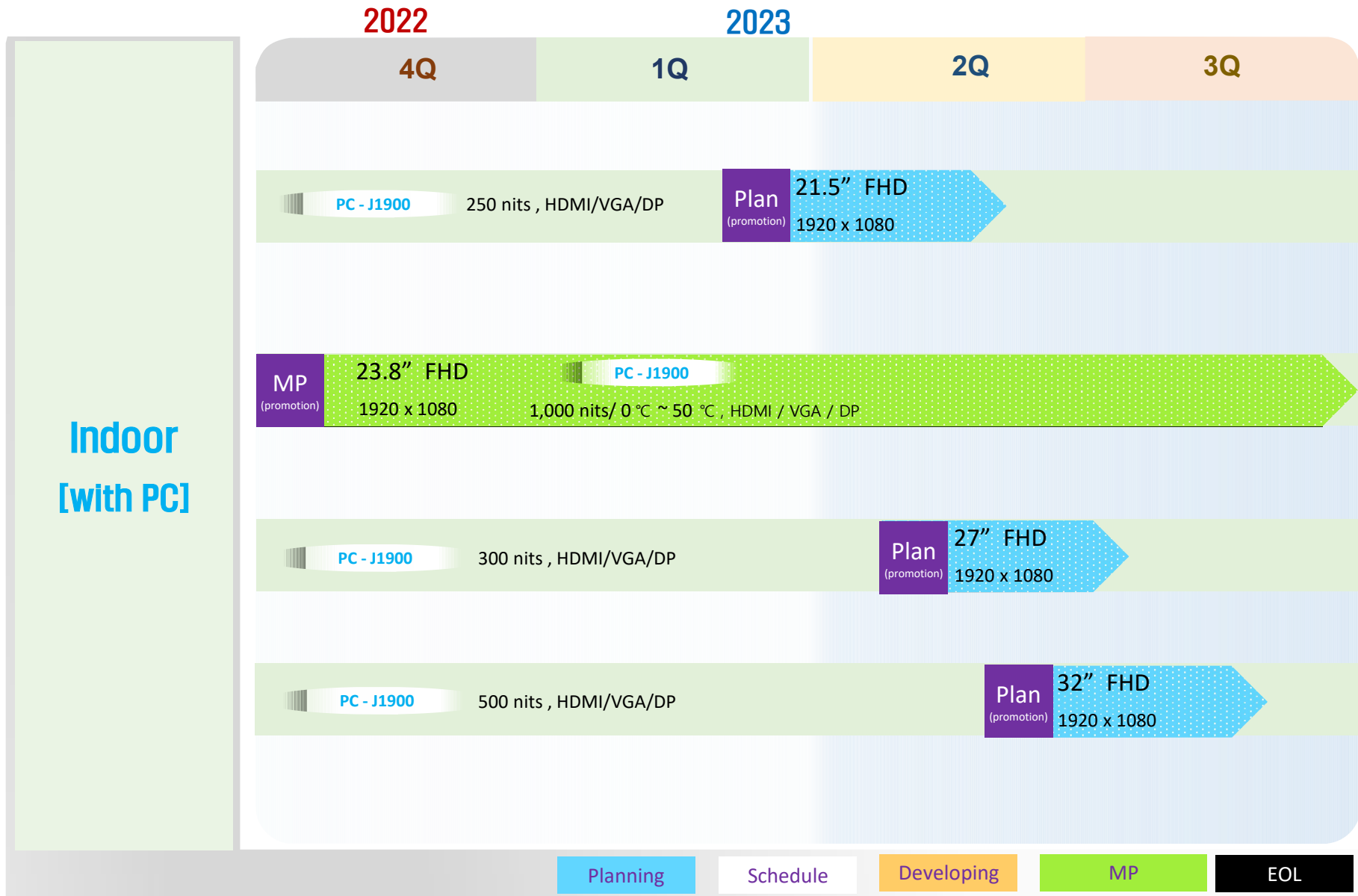
## ❖ Applications



# PCAP touch monitor – Product roadmap



# PCAP touch PC monitor – Product roadmap



# PCAP touch monitor – Overview (Outdoor)

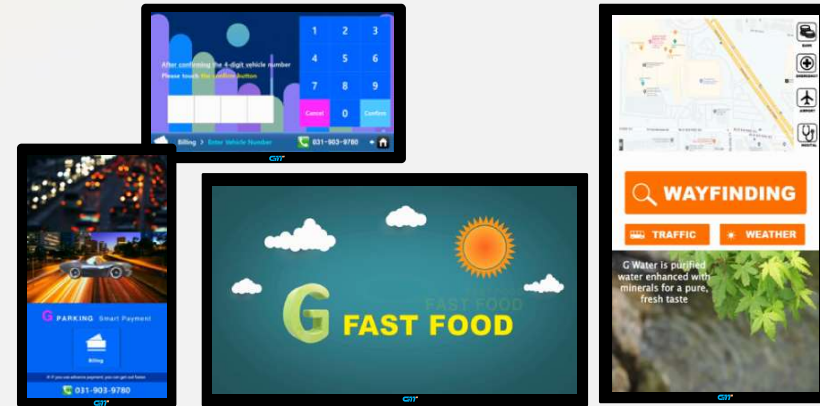
## ◆ Open frame monitor **Integrated PCAP Touch**

**Wide temperature** (-20°C ~ 60°C<)

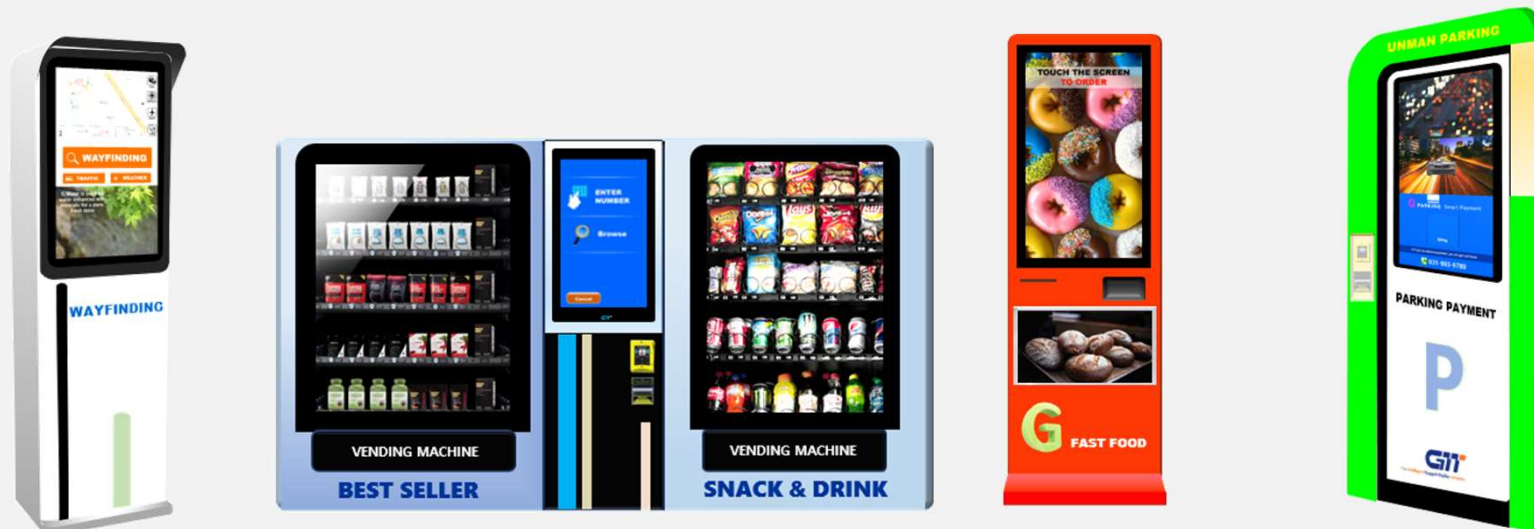
**High brightness** (1,500nits ~)

**Full capabilities** (Less NRE & Fast developing)

**Specialist in custom-made projects**

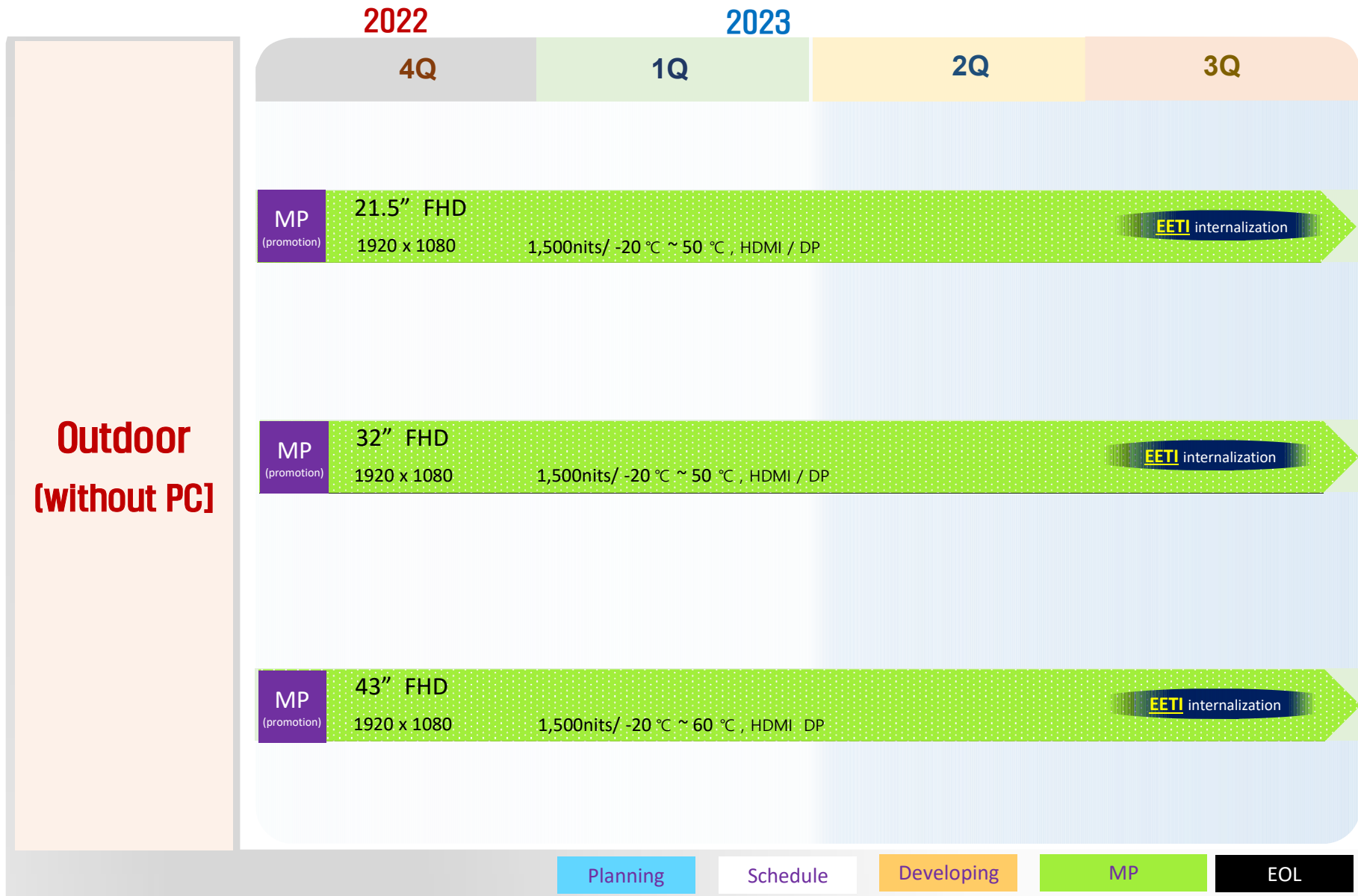


## ❖ Applications



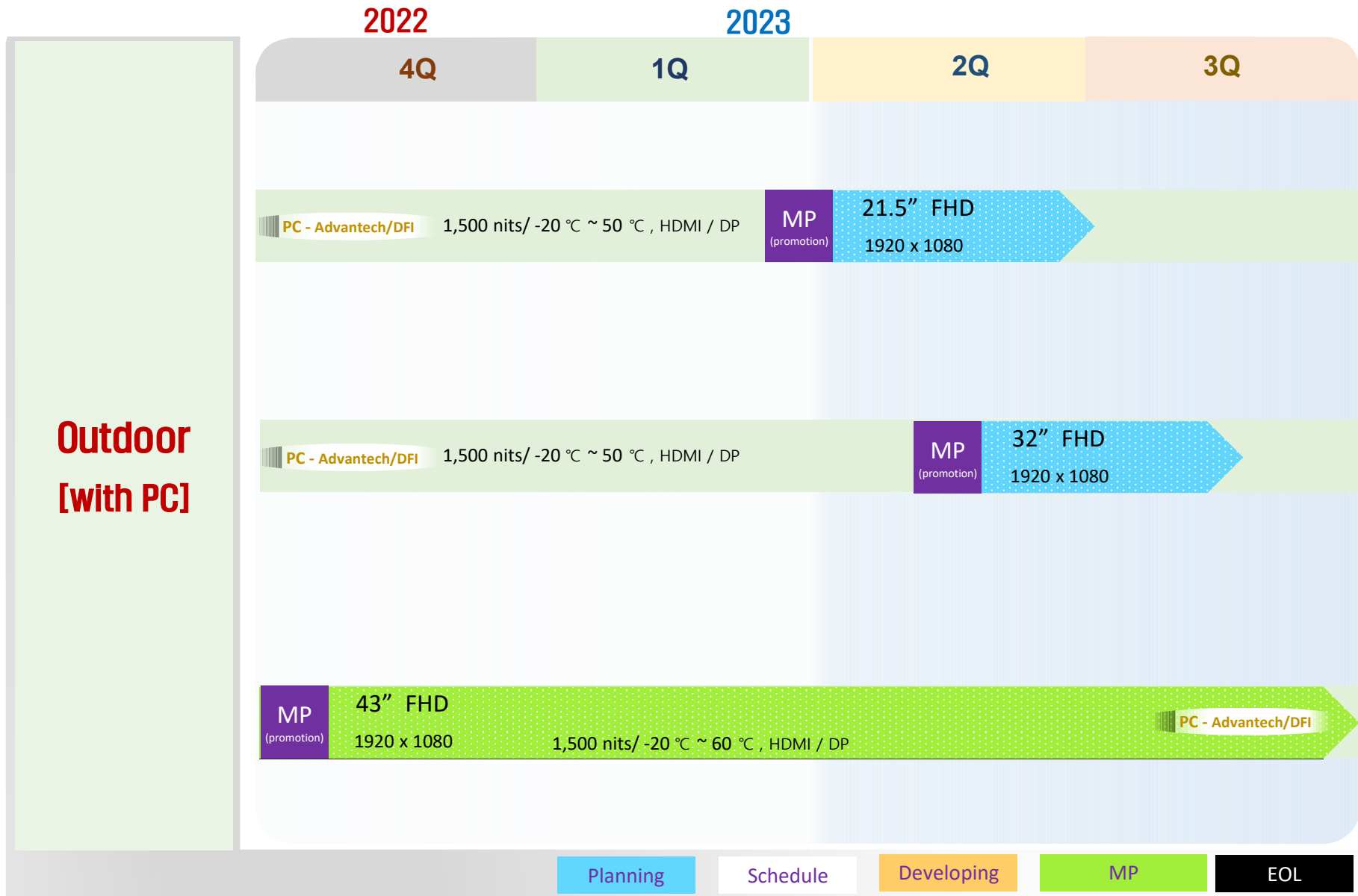


# PCAP touch monitor – Product roadmap



**Outdoor  
(without PC)**

# PCAP touch PC monitor – Product roadmap



● **Specification of Windows 10 PC** ( Android PC will be updated by 2Q, 2023 )

Item		J1900 (indoor)	ADVANTECH (outdoor)	DFI (outdoor)
System	CPU	Intel Quad core	Intel Quad core	AMD Ryzen R2314
	Frequency	2.0 GHz	1.5GHz(burst up 3.0GHz)	2.1GHz(burst up 350GHz)
	Core Number	4		
OS		Win 10		
Memory		2GB(DDR3)	16GB(DDR4)	16GB(DDR4)
I/O	LAN	Wire(RJ45 x 2)	Wireless(WiFi)	Wire(RJ45)
	USB	3.0 x 1, 2.0 x 3	3.0 x 2, 2.0 x 2	3.0 x 6
	Display	HDMI x 2	HDMI, DP	HDMI, DP
	Serial	RS232 x 2, RS485 x 2	RS232(422/485) x 2	-
Storage	mSATA	32GB	256GB	256GB
Power	Input	12Vdc	12~28Vdc	12Vdc
	Consumption	10W	9.6W	10W
Temperature	Operating	-20°C ~75°C	-40°C ~60°C	-40°C ~60°C

## New product – Light & Sound Haptic Touch

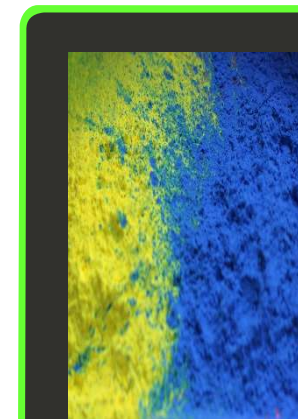
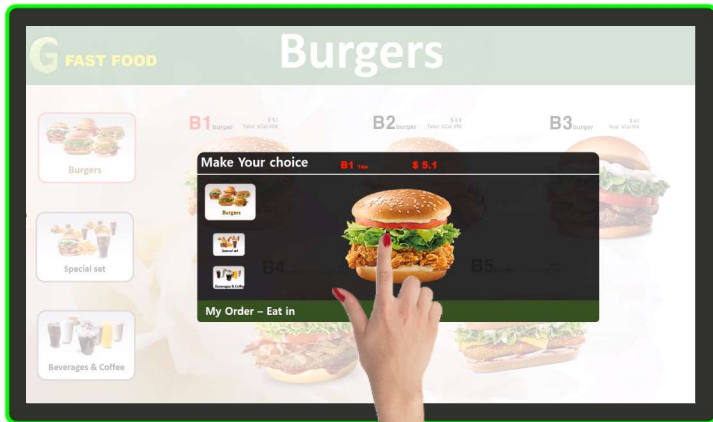
### User friendly features

- . Light & Sound Haptic feedback functions based on PCAP touch
- . Activates when users touch the screen
- . Get more attention and give conveniences to users
- . Users can easily and directly recognize the touch is done



# New product – Light & Sound Haptic Touch

- . Lighting through glass (LED light bar attached under the edge of touch glass)  
Custom requirements are available



Normal

Light On



Example

- . Different from just decorated & constant LED lighting



Thank You!

GTT Co., Ltd.

for any further question please contact:



Norderstrasse 8      24632 Lentföhrden  
Tel.: +49-(0) 4191 - 2755      Fax: +49-(0) 4191 - 4495  
e-mail: [crafterdata@craftdata.de](mailto:crafterdata@craftdata.de)