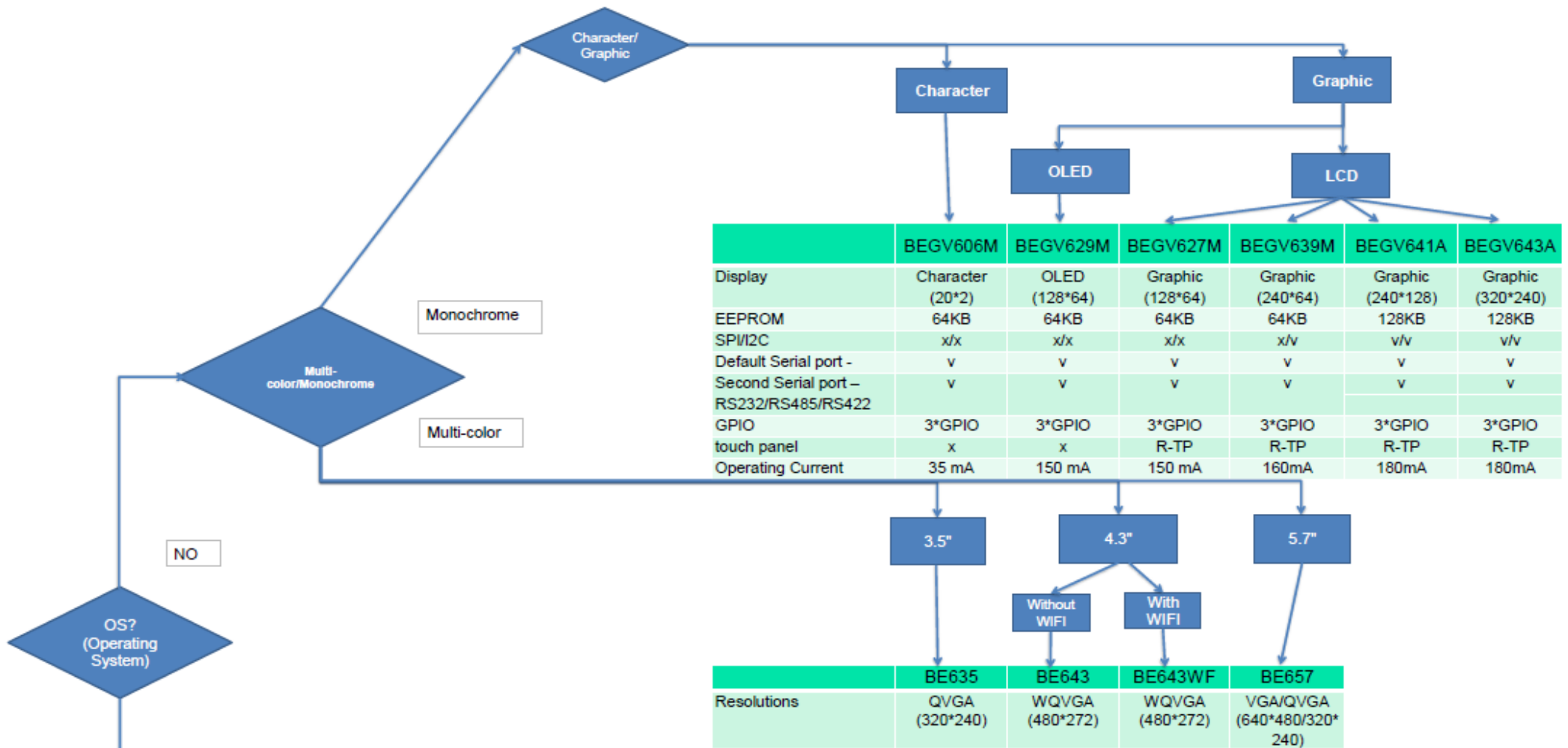


Embedded LCD

Embedded LCD consists of the LCD display and embedded system, which is microprocessor-based computer hardware with built-in software to perform specific functions.

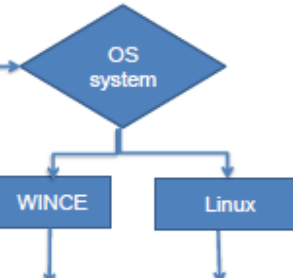
Bolymin have in-house embedded system design team and have many standard part numbers in its catalog. We are also capable to design and manufacture embedded systems as per customer's specs.

It controls many devices in common use nowadays for industrial applications. POS system, HMI's, medical devices, security control, entertainment system, digital signage, industrial automation and automotive control electronics.



YES

SPI/I2C	v/v	v/v	x/v	v/v
Default Serial port - RS232	v	v	v	v
Second Serial port – RS232/RS485/RS422/USB	v	v	v	v
GPIOs	12*GPIO	12*GPIO	12*GPIO	12*GPIO
touch panel	R-TP	R-TP	C-TP	R-TP
ADC	1*ADC	1*ADC	1*ADC	1*ADC
CAN bus	x	x	v	x
Wi-Fi	x	x	v	v



	BEGA220A	BE230E1
Wi-Fi	V	V
Bluetooth	X	V
GPIO	12*GPIO	8*GPIO
ADC	6-ADC	4-ADC
OS	WINCE5.0	Linux
Serial Port	1*RS485/422 3*RS232	1* RS485/422 1* RS232
Ethernet	v	v
USB	1*USB 1.1/1*USB2.0	1*USB 2.0 / 1* USB 2.0 OTG
Display	7" TFT	7" TFT
TP	R-TP	C-TP

Embedded System industrial products

Model	Dimension	Display	Memory	Power	IO Port	Remark
BEGV606M	116x37x15mm	20x2 Character LCD	64KB ISP Flash memory / 8KB SRAM	DC 4.5V~5.5V	1xRS485/422/232,1xRS232	
BEGV627M	93x70x15mm	128x64 Graphic LCD	64KB ISP Flash memory / 8KB SRAM	DC 4.5V~5.5V	1xRS485/422/232,1xRS232	4 wired resistive touch panel interface
BEGV629M	75x52.7x12.3	128x64 Graphic LCD	64KB ISP Flash memory / 8KB SRAM	DC 4.5V~5.5V	1xRS485/422/232,1xRS232	OLED driver and utility are supported
BEGV639M	180x65x19mm	240x64 Graphic LCD	64KB ISP Flash memory / 8KB SRAM	DC 4.5V~5.5V	1xRS485/422/232,1xRS232	4 wired resistive touch panel interface
BE635	93x67x15mm	3.5" TFT-LCD with 320X240(QVGA) resolution	512KB ISP flash memory, 64KB SRAM	DC 5V	1 x RS232/422/485/USB	Support micro SD 4 wired resistive touch panel interface
BE643	125.8x71.5x14.25mm	4.3" TFT-LCD with 480x272 (WQVGA) resolution	512KB ISP flash memory, 64KB SRAM	DC 5V	1 x RS232/422/485/USB	Support micro SD 4 wired resistive touch panel interface
BE643WF	121.5x69.4x16mm	4.3" TFT-LCD with 480x272 (WQVGA) resolution	512KB ISP flash memory, 64KB SRAM	DC 5V	1 x RS232/422/485/USB	Support micro SD CAN BUS capactive touch panel
BE657	164x106x29mm	5.7" TFT-LCD with 640x480 resolution (320X240 optional)	512KB ISP flash memory, 64KB SRAM	DC 5V~24V	1 x RS232/422/485/USB	Support micro SD 4 wired resistive touch panel interface
BE230E1	191x129x44.7mm	7" TFT LCD with 800 x 480 WVGA	DDR3L 512MB	DC 9V~36V	1 x RS485/422, 1 x RS232 1 x USB 2.0 Host, 1 x USB 2.0 OTG, 4 x ADC	Support 2.4G Wi-Fi 802.11b/g/n Support Bluetooth Support SD/SDHC card Support ADC