

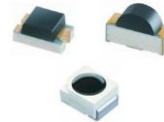
SMD Type Infrared LED

No	Part No	IF	Angle(Deg)	Size (mm)	Lens Color
1	FYLS-0603BIRAC	20mA	140	1.60*0.80*0.60	Water clear
2	FYLS-0805IRAC	20mA	140	2.00*1.25*0.80	Water clear
3	FYLS-3528IRCC	20mA	120	3.50*2.80*1.90	Water clear



SMD Type Photo Diode

No	Part No	IF	Angle(Deg)	Size (mm)	Lens Color
1	FYLS-1206PDB	20mA	120	3.20*1.60*1.10	Black
2	FYLS-3528PTB	20mA	120	3.50*2.80*1.90	Black



SMD Type UV LED

No	Part No	IF	Angle(Deg)	Size (mm)	Lens Color
1	FYLS-0603BUVAC	20mA	120	1.60*0.80*0.60	Water clear
2	FYLP-3535EUVAUVCC	20mA	120	3.50*3.50*1.59	Water clear

